

WYCLIFFE PLAT TWO

0520-008

33

SCHOOL SITE DEED TO PALM BEACH COUNTY SCHOOL BOARD
(O.R.B. 5650, PG.1387)

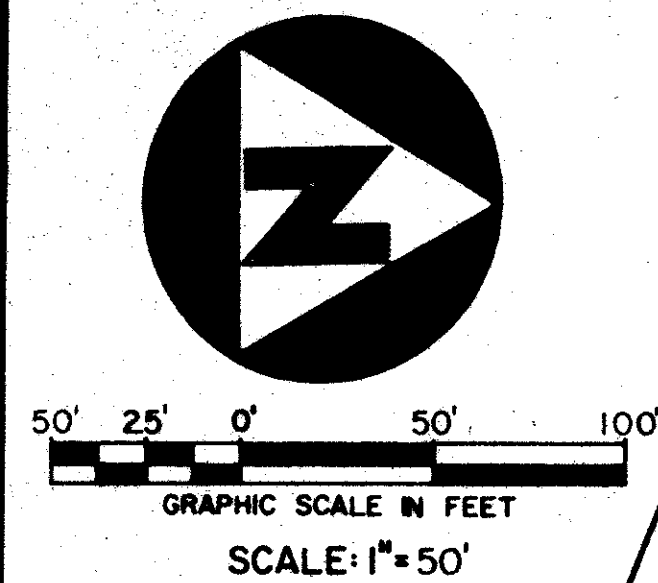
N00°52'23"E 1090.22'

State Of Florida)
) SS
County Of Palm Beach

This Plat was filed for record at
this day of
A.D., 1989, and duly recorded
in Plat Book _____ on
Page _____ through _____

John B. Dunkle,
Clerk of the Circuit Court.

By: _____ Deputy Clerk



LAKE WORTH ROAD EXTENSION
NORTH LINE 120' R/W LAKE WORTH ROAD
R=2804.79' Δ=27°13'22" A=1332.63'

C/L

TRACT "P"
A=68.01'
Δ=57°18'16"

TRACT "P"

TRACT "P"

TRACT "P"

TRACT "L-4P"

TRACT "L4"

TRACT "L"

SUBJECT TO REPLATTING
PRIOR TO DEVELOPMENT

TRACT "P"

75' ACME IMPROVEMENT DISTRICT RIGHT-OF-WAY
(O.R.B. 1081, PG.623)

S89°07'37"E 1099.56'

0520-008
Pet. 86-104
allocation 0001

66/33

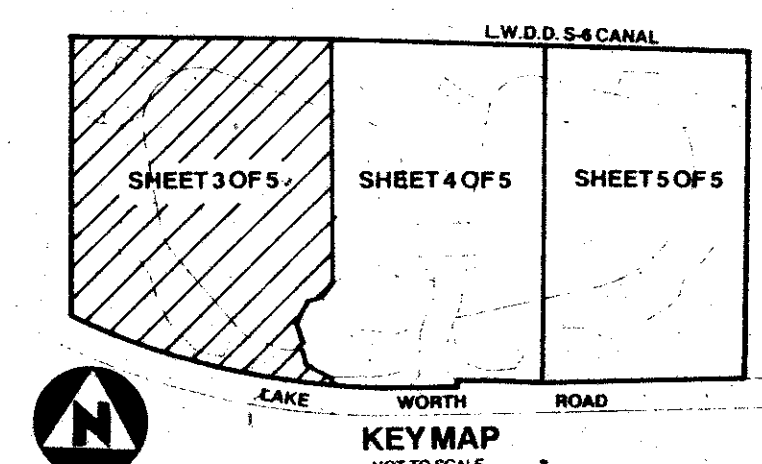
MATCH LINE
SEE SHEET 4 OF 5

SUBDIVISION * Wycliffe Plat 2
BOOK 66 PAGE 33
FLOOD ZONE B FLOOD MAP #100B
QUAD # 63 ZONING RT
SE 86-104 ZIP CODE 33467
PUD NAME 2514441

MATCH LINE
SEE SHEET 4 OF 5

RECORDED SUBDIVISION SOUTH OF RIGHT-OF-WAY LAKE WORTH ROAD
EXTENSION AS SHOWN HEREON IS WYCLIFFE PLAT ONE PG. 62, PG. 8-13

- Legend:**
- Indicates A Permanent Reference Monument #2424 (P.R.M.)
 - Indicates A Permanent Control Point #2424 (P.C.P.)



This instrument was prepared by Wm. R. Van Campen, R.L.S., in
and for the offices of Bench Mark Land Surveying & Mapping, Inc.,
4152 W. Blue Heron Boulevard Suite 121, Riviera Beach, Florida

BENCH MARK
LAND SURVEYING & MAPPING, INC.
WEST PALM BEACH, FLORIDA - RIVIERA BEACH, FLORIDA

RECORD PLAT
WYCLIFFE PLAT TWO

OWN	CKD	DATE	W.D. NO.
SCALE	SIZE	FB #	SHEET 3 OF 5